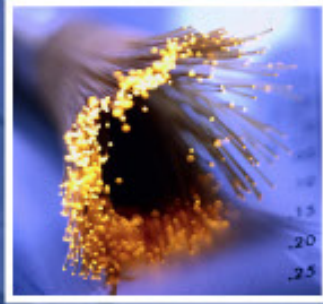


ABRA

ÉLECTRONIQUES • ELECTRONICS CORP.

Your Source for Satisfaction.



Communication

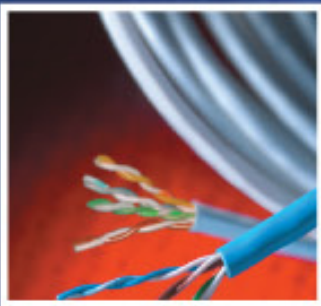
Security/CCTV/Home Automation

Wire & Cable

Power Products

Testing & Tools

...and More!



1-800-361-5237 • www.abra-electronics.com

ABRA

ÉLECTRONIQUES • ELECTRONICS CORP.

In 2010, ABRA Electronics celebrated its 20th year of operation. Our mandate has always focused on customer service and treating each and every customer with respect, regardless of the size of their query.

ABRA's 15,000-square foot warehouse stocks many of today's widely-used components, but our strength also lies in our ability to source allocated and obsolete product. Moreover, our knowledgeable management and staff will endeavor to meet all requests in as timely a manner as possible.

Whether you are an OEM client, a prototype shop, an educational institution, a retailer or a government department, whether you wish to place a major order or just need a few items in a hurry, ABRA is ready to satisfy your requirements.

We're not really about magic, but rather about commitment and diligence... although we CAN produce your required parts in a flash!



We are a proud member and owner of Edge, a national distributor group committed to offering you extensive inventory selection, excellent local service and vast product knowledge.

Utilizing the group's purchasing power of more than \$700 million, we are able to deliver you the right items at competitive prices. Our knowledgeable staff provides answers and prompt solutions to all of your product needs. We draw products from our expansive local inventory, but also have access to hundreds of thousands of products throughout the group's network of more than 170 warehouses across the U.S. and Canada. Whatever your need, Edge members can provide the solution.

Linecard for ABRA Electronics

| | | |
|--|------------------------------------|--------------------------------------|
| 3COM (Tech Data) | Campbell (Apex Tool Group) | Fluke |
| 3M (WireXpress) | Carol Cable (General Cable) | Fluke Networks |
| ADC (KGP Logistics) | Caulk Master (Apex Tool Group) | GC Electronics (Waldom) |
| Agastat Relays/Tyco (Waldom) | Channel Master | General Cable |
| Aiphone Intercom Systems (WireXpress) | Channel Plus | Global Specialties |
| AirVac | Cherry Switch (Waldom) | Grayhill (Waldom) |
| Alcoswitch/Tyco (Waldom) | Chicago Miniature Lamp (NTE) | Greenlee A Textron Company |
| Allied Telesis (Tech Data) | Cinch (Waldom) | Guest (Marinco) |
| American Electrical | Cisco Systems (Tech Data) | Helix/Hi Temp (General Cable) |
| Amp/Tyco (Waldom) | Coast Flashlights (NTE) | HellermannTyton |
| Amphenol Commercial Products (Waldom) | Comm Scope (WireXpress) | Hewlett-Packard (Tech Data) |
| Amphenol Connex (NTE) | Concord (Waldom) | HK Porter (Apex Tool Group) |
| Amphenol RF | Connect Tool/Paladin | Howard W. Sams |
| Amphenol RF (NTE) | Cooper Bussmann | IC Intracom |
| Amprobe | Cornell Dubilier (Waldom) | ICM Corporation |
| AND (Waldom) | Corning (WireXpress) | Ideal Industries |
| APC American Power Conversion (Tech Data) | Crescent (Apex Tool Group) | Ingersoll Rand Security Technologies |
| Apex Tool Group | Crouzet (Waldom) | Intel (Tech Data) |
| Avocent (Tech Data) | Crydom (Waldom) | Intelix |
| Axis Communications (Tech Data) | Cynergy3 Components (Waldom) | Intellinet |
| B & K Precision | Dantona Industries | Interfan (Waldom) |
| B & W International | Deltrol | IO Gear (Tech Data) |
| Beau Vernitron/Molex (Waldom) | Derkoron Wire & Cable (WireXpress) | IPEX |
| Belden | Dialight (Waldom) | ITW-Dymon (NTE) |
| BICC-Cables Inc. | Diamond (Apex Tool Group) | JKL Components (Waldom) |
| Black Box | Duracell-Canada | Kahnetics (Apex Tool Group) |
| Bogen Communications, Inc. | DYMO | Kester Solder (NTE) |
| Brady Corporation (WireXpress) | Eclipse Tools | KGP Logistics |
| Buchanan/Tyco (Waldom) | Edison Fuses (Apex Tool Group) | Kilo International (NTE) |
| C&K Components (Waldom) | Electroswitch (Waldom) | Kings (Waldom) |
| Cables Unlimited | Energizer | Kingston (Tech Data) |
| | Erem (Apex Tool Group) | Knight Electronics (Orion Fans) |
| | Erico/CADDY Inc. | LANscape/Corning (WireXpress) |
| | Flatwire (WireXpress) | Lantronix (Tech Data) |

| | | |
|--|--|-----------------------------|
| Leviton | Plato (NTE) | Sony (Tech Data) |
| Linear Corporation | Platt Luggage | Speco Technologies |
| Linksys (Tech Data) | Plumb (Apex Tool Group) | Spectrol (NTE) |
| Lufkin (Apex Tool Group) | Pomona | SR Components/Jim Pak |
| Lutze (WireXpress) | Portasol/Weller (Apex Tool Group) | SRC Devices (Waldom) |
| M & S Systems (Linear) | Potter & Brumfield/Tyco (Waldom) | Stancor (NTE) |
| Mallory (Waldom) | Power Sonic | Superior Essex (WireXpress) |
| Manhattan (IC Intracom) | Precision Electronic Components (NTE) | Tech Data |
| Marinco | Premier (KGP Logistics) | Techspray (NTE) |
| MG Chemicals | Premier Raceway Products (Waldom) | Teledyne Relays (Waldom) |
| Middle Atlantic Products, Inc. | Pro Video (Speco) | Triad Magnetics (Waldom) |
| Mode Electronics Ltd | ProVision (NTE) | Tripp-Lite |
| Molex (Waldom) | Provo | UltraLast |
| Mueller Electric | Psiber (NTE) | UltraLast Green |
| Network Video Technologies | Qualtek (Waldom) | Unicom Electric (NTE) |
| New Generation Wire (Belden) | Quest Manufacturing Company | Volex |
| Nicholson (Apex Tool Group) | Quest Technology International | Von Duprin (Ingersoll Rand) |
| NTE Electronics, Inc. | Quiktron | Waber (Tripp-Lite) |
| Ohmite (Waldom) | Radix (WireXpress) | Waldom Electronics |
| Olflex Cable (WireXpress) | Sams Technical Publishing | Weller (Apex Tool Group) |
| Omni Mount Systems, Inc. | Schlage | Western Digital (Tech Data) |
| Omron (Waldom) | Seagate (Tech Data) | Wire-Wrap (Apex Tool Group) |
| Open House / X10 | Siemon (KGP Logistics) | WireXpress |
| Optex | Signamax Connectivity Systems | Wiss (Apex Tool Group) |
| Orion Fans | SolaHD | Xcelite (Apex Tool Group) |
| Osram-Sylvania (Waldom) | | |
| Paladin Tools | | |
| Pan Pacific Enterprise Company, Inc. | | |
| Panasonic CCTV (Waldom, WireXpress) | | |
| Panduit | | |
| Pelco | | |
| Philmore (LKG Industries) | | |
| Pico of Canada Ltd. | | |



ABRA

ÉLECTRONIQUES · ELECTRONICS CORP.

1320 Route 9, #21
Champlain, NY 12919
(800) 717-ABRA (2272)
Fax: (800) 898-ABRA (2272)

5580 Cote de Liesse
Montreal, QC H4P 1A9
(514) 731-0117
Fax: (514) 731-0154

www.abra-electronics.com



\$90 Million In Inventory and Access To Over 1000 Product Lines